

## BACK TO BACK applicazione per motorizzati e teste

BACK TO BACK driven tools and angle head application

BACK TO BACK Anwendungen für angetriebene Werkzeuge Winkelpöpfe

BACK TO BACK aplicaciones para motorizados y cabezales angulares



**ROTOFLUX**



Lubrorefrigerante / Coolant  
Kühlschmiermittel / Liquido  
Frigeradoro

70 bar / 1015 PSI

90°C / 195°F

6.000 to 10.000  
By dimension

30 μ  
(MAX 60)



### BACK TO BACK APPLICAZIONE PER MOTORIZZATI E TESTE

Questa soluzione Rotoflux Back To back, simile a DIN EN 12755 (24960), risolve il problema del passaggio del fluido refrigerante attraverso i motorizzati e le teste angolari. Lo speciale disegno, studiato per ottimizzare gli spazi, consente al cliente di ridurre al minimo gli ingombri.



### BACK TO BACK DRIVEN TOOLS AND ANGLE HEAD APPLICATION

This Rotoflux Back To Back solution, similar to DIN EN 12755 (24960), allows the passage of coolant through driven tools and angle head applications. The special design of the rotary union allows the client to minimize the overall dimensions.



### BACK TO BACK ANWENDUNGEN FÜR ANGETRIEBENE WERKZEUGE WINKELPÖPFE

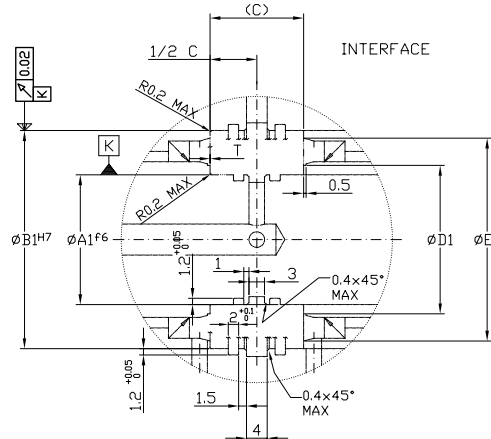
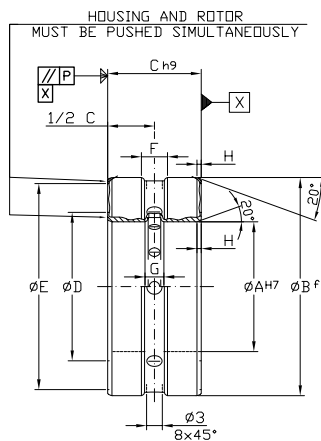
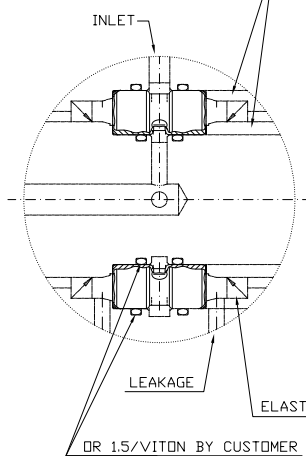
Diese Rotoflux Back To Back Lösung, ähnlich der DIN EN 12755 (24960), ermöglicht den Durchgang des Kühlmittels durch angetriebene Werkzeuge und Winkelkopfanwendungen. Die spezielle Konstruktion der Drehdurchführung ermöglicht es dem Kunden, die Gesamtabmessungen zu minimieren.



### BACK TO BACK APLICACIONES PARA MOTORIZADOS Y CABEZALES ANGULARES

Los juntas Rotoflux Back To Back, similar a DIN EN 12755 (24960), permiten el paso de de fluido refrigerante a través de los motorizados y cabezales angulares. Su diseño especial permite al cliente reducir al mínimo el espacio de montaje.

THE RINGS MUST ALSO BE USED FOR THE TRANSMISSION OF THE FRICTION TORQUE



Ordering code	INTERNAL DIAMETER		EXTERNAL DIAMETER		WIDTH	ROTOR LOCK	ØD1	HOUSING LOCK	ØE1	HOUSING GROOVE	ROTOR GROOVE	WIDTH CHAMFER	PARALLELISM	OFFSET	SPEED (RPM)		
	ØA	h7	ØA1	f6												ØB f7	ØB1 H7
K08-9100-F20	20		37		18	23.6	23.6 ÷ 25	34.7	31 ÷ 34	5	3.6	0.8	0.005	0 ± 0.15	0,1	10.000	
K08-9100-F25	25		42		18	28.6	28.6 ÷ 30	39.7	36 ÷ 39	5	3.6	0.8	0.005	0 ± 0.15	0,2	10.000	
K08-9101-F25	25		47		18	28.6	28.6 ÷ 30	39.7	36 ÷ 39	5	3.6	0.8	0.005	0 ± 0.15	0,2	10.000	
K08-9100-F30	30		47		18	33.6	33.6 ÷ 35	44.7	41 ÷ 43	5	3.6	0.8	0.005	0 ± 0.15	0,2	10.000	
K08-9101-F30	30		55		18	33.6	33.6 ÷ 35	44.7	41 ÷ 43	5	3.6	0.8	0.005	0 ± 0.15	0,2	10.000	
K08-9100-F35	35		62		18	44.5	40 ÷ 45	56.7	52 ÷ 55	5	3.6	0.8	0.005	0 ± 0.15	0,2	8.000	
K08-9100-F40	40		62		18	44.5	44.5 ÷ 45	56.7	52 ÷ 55	5	3.6	0.8	0.005	0 ± 0.15	0,2	8.000	
K08-9101-F40	40		68		18	44.5	44.5 ÷ 45	56.7	52 ÷ 55	5	3.6	0.8	0.005	0 ± 0.15	0,2	8.000	
K08-9100-F50	50		80		24	55,5	55 ÷ 57	69.7	63 ÷ 68	5	4.6	1	0.007	0 ± 0.20	0,3	6.000	